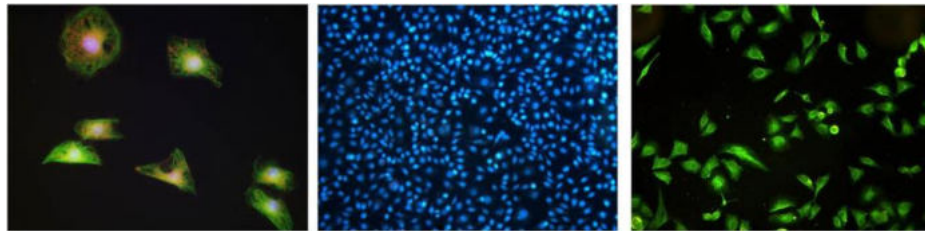


- One-stop operation of light source synchronous switching with filter groups.
- No required of external or added power supply.
- Multiple high-efficiency fluorescent bands are available for different fluorescent applications.
- No need to preheat, easy to operate.



Upright single-color fluorescence Illuminator



Specification

Filter group	B	B BP : EX:475/30nm; DM:505nm; EM:530/40nm
	B	B LP : EX:475/30nm; DM:500nm; EM:510 nmLP
	G	GBP: EX:530/40nm; DM:565nm; EM:605/55nm
	G	G LP : EX:530/40nm; DM:570nm; EM:575 nmLP
	U	UVBP: EX:375/30nm; DM:415nm; EM:460/50nm
	U	UVLP: EX:355/50nm; DM:410nm; EM:420 nmLP
	Y	YLP: EX:560/40nm; DM:600nm; EM:610 nmLP
Excitation light source	3W LED (Y/G 5W), adjustable brightness, visual digital display	
Observation method	Fluorescence, bright field switching	
Input power_	DC 12V2A	